

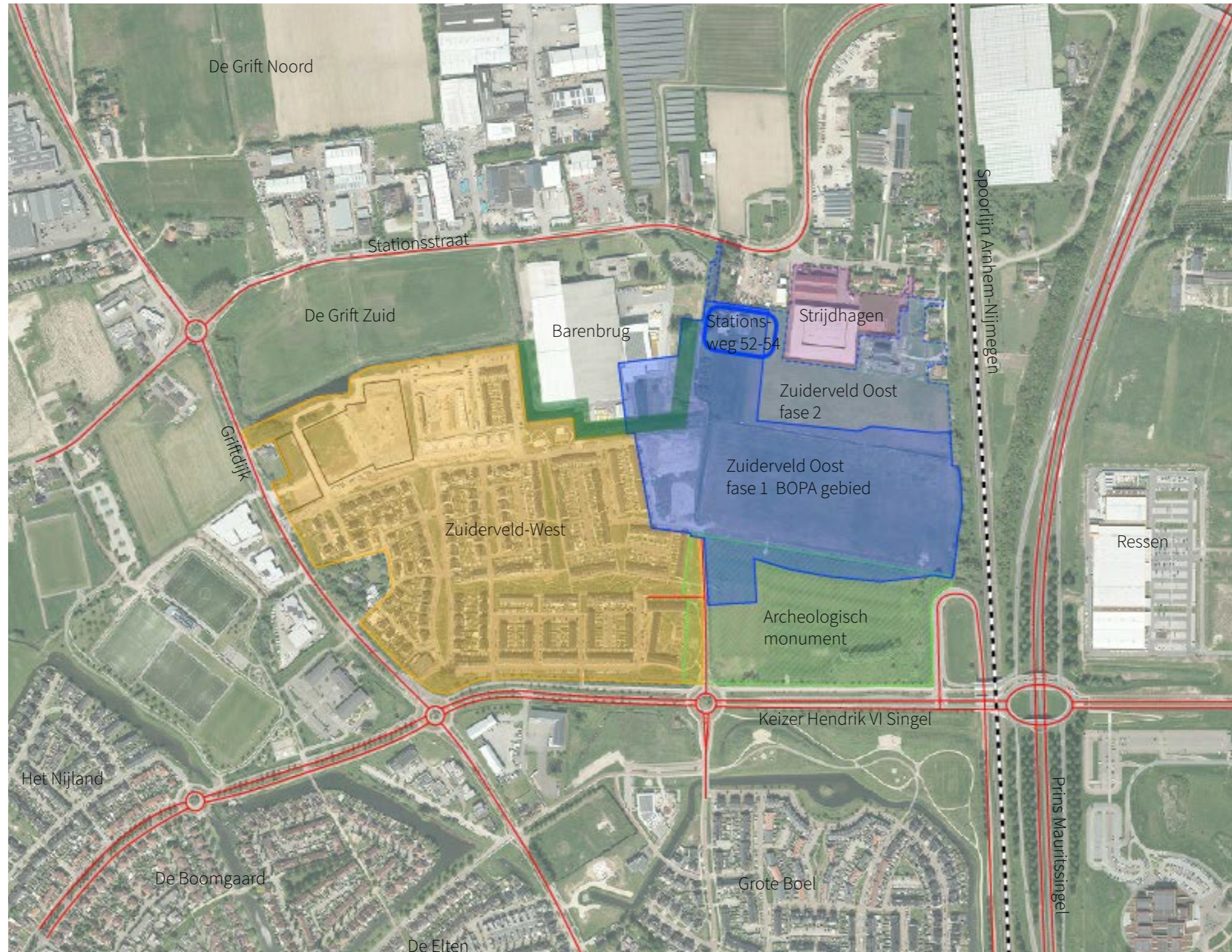
STEDENBOUWKUNDIG PLAN BOPA FASE 1 ZUIDERVELD OOST

Waalsprong - Nijmegen

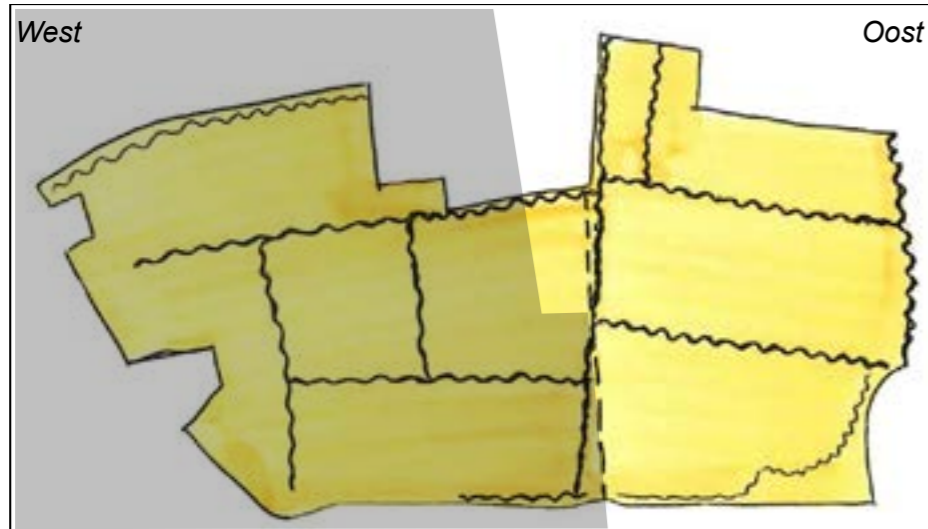
28 november 2024



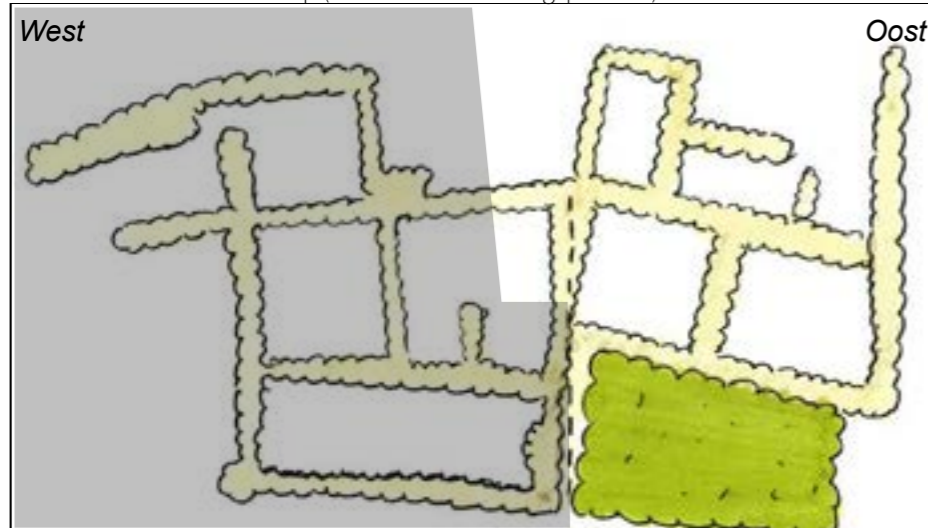
LIGGING IN DE WAALSPRONG



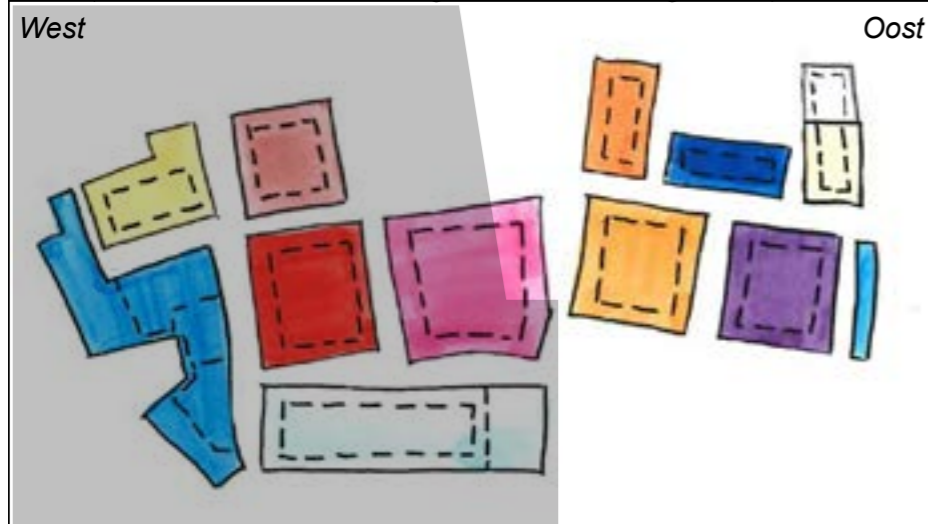
AANSLUITING MET ZUIDERVELD WEST EN OMGEVING



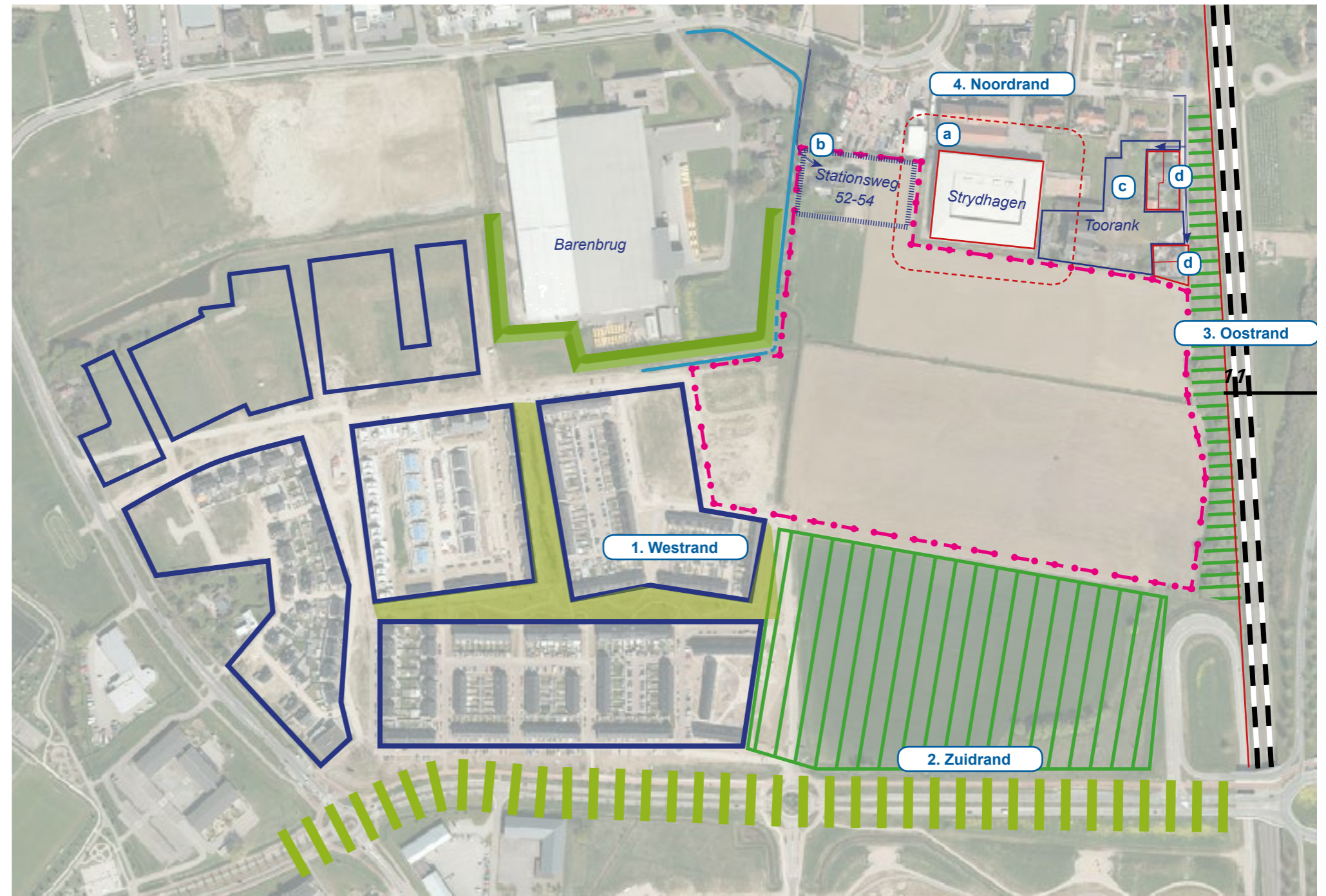
Historisch Betuws landschap (sloten en verkavelingspatroon) Zuiderveld



Vlakkenpatroon i.c.m. robuuste nieuwe groenstructuur als drager concept Zuiderveld



Vlakverdeling op bouwveldniveau Zuiderveld o.b.v. blokverkaveling



Randen Zuiderveld Oost

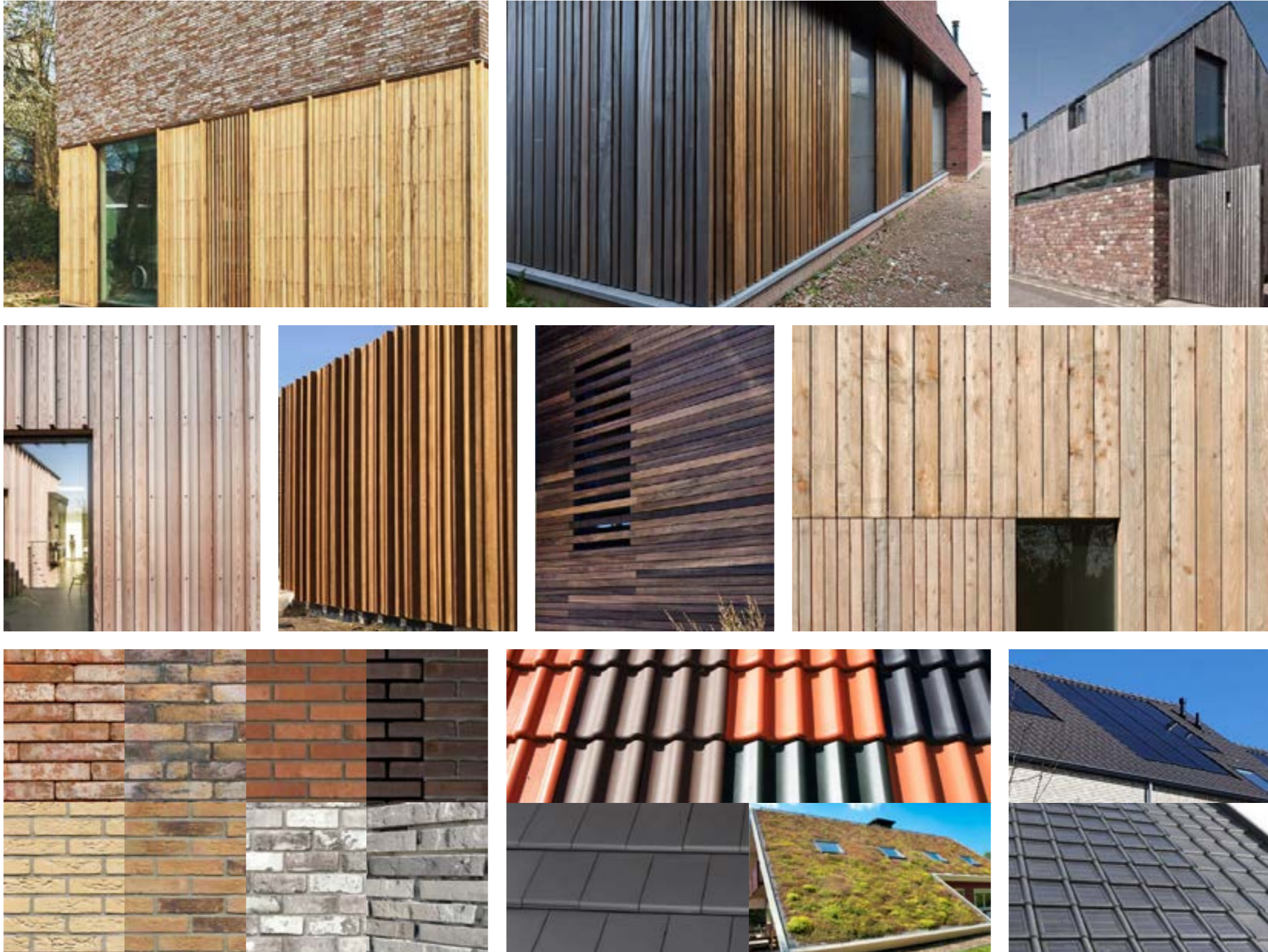
VOORTZETTING OPENBARE RUIMTE ALS IN ZUIDERVELD WEST



STEDENBOUWKUNDIG PLAN BOPA EN BLOKVERKAVELING



ARCHITECTUUR REFERENTIES



VERKEERSONTSLUITING



HOEKOPLOSSINGEN EN SPECIALS



OVERGANGEN OPENBAAR/PRIVÉ EN ERFAFSCHIEDINGEN



A photograph of a residential street on a sunny day. In the foreground, a green lawn is scattered with fallen leaves. On the left, a wooden birdhouse stands on a small patch of plants. A ginger and white cat is walking across the lawn. In the background, there are modern houses with solar panels on their roofs. The sky is blue with some light clouds. The text 'VRAGEN???' is overlaid in the center in a large, bold, red font.

VRAGEN???